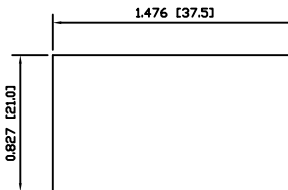
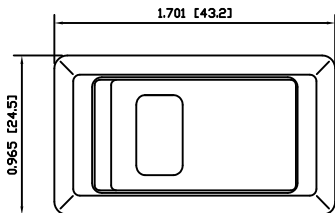


SUGGESTED PANEL CUTOUT



MATERIALS

- BODY:  
Phenolic (PF), UL94 V-2
- ACTUATOR:  
Polyamide 6/6 (PA66), UL94 V-2  
Polycarbonate (PC), UL94 HB
- SEALING MEMBRANE:  
Silicone Rubber
- SPRING:  
Plano Wire
- MOBILE CONTACT BAR:  
Copper
- CONTACT PADS:  
Silver Clad Copper
- RIVETS:  
Copper
- TERMINALS:  
Brass
- LAMP:  
Neon Bulb
- RESISTOR:  
Carbon Film Resistor
- PC BOARD:  
Laminate

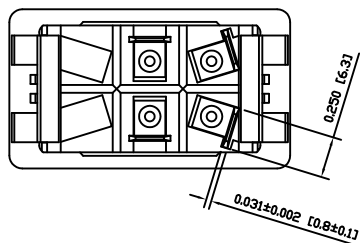
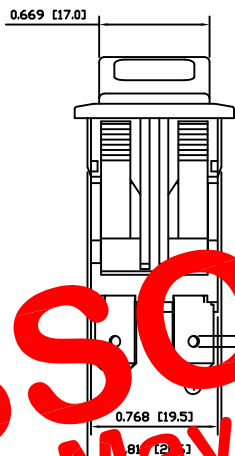
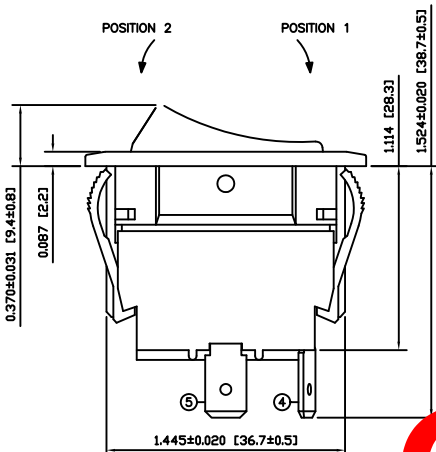
SPECIFICATIONS

- FUNCTION:  
2P1T OFF-ON
- RATINGS:  
ANSI/UL 508 and CAN/CSA C22.2 No.14 (E195908):  
20A 125VAC [cURus]  
15A 277VAC [cURus]  
2HP 110/250VAC [cURus]
- ILLUMINATION VOLTAGE:  
250V
- CONTACT RESISTANCE:  
Initial: 10mΩ Max.
- ELECTRICAL LIFE:  
6,000 Cycles [cURus]
- TEMPERATURE:  
Operating: 0°C to 40°C [cURus]
- INGRESS PROTECTION:  
IP54
- APPROVALS:

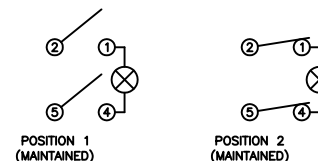
COLORS AND MARKINGS

- BODY COLOR:  
Black
- ACTUATOR COLOR:  
Black
- LENS:  
Transparent Red
- MARKING:  
None
- MARKING COLOR:  
None

**OBSOLETE**  
 May 2017  
 PCR 22506



SCHEMATIC



ACTUATOR	B	10/05/26	CAB
BODY	B	09/05/26	CAB
COLORS	A	09/06/11	CAB
MATERIALS	C	10/03/01	CAB
SPECIFICATIONS	C	10/03/01	CAB
REFERENCE	REV.	DATE	BY

THE INFORMATION CONTAINED IN THIS DOCUMENT IS PROPRIETARY TO E-SWITCH AND IS NOT TO BE COPIED OR TRANSFERRED

REV.		DESCRIPTION	DATE	BY
A		INITIAL RELEASE	09/09/28	CAB
B		CORRECTED SPECIFICATIONS	09/12/09	CAB
			09/09/28	CAB

DIMENSIONS	
INCHES [MILLIMETERS]	
GENERAL TOLERANCES	
±0.008 [±0.2] / ±1"	
SCALE	PROJECTION
DRAWING NOT TO SCALE	

RVW42D1100-117

DRAWING NUMBER	DATE	REVISION
34-RVW42D1100117	DECEMBER 9, 2009	B